

Chilbolton and Wherwell Community Magazine

It's that time of year when everything seems flat, with spring and the next holiday light years away. Resolutions, if kept, add to the dullness. If not, well there's always Lent coming up. . . However, the joy of living in a village, or rather two villages, is there's always something going on. A quick look at Diary dates will reveal we're again spoilt for choice – starting with Moviola's brilliant film, **Tinker Tailor Soldier Spy**. The Panto, **Treasure Island**, is another highlight. Quite different - West Down has become a sort of mini New Forest with two delightful moorland ponies happily pottering about.

Tessa Youell

MAGAZINE COMMITTEE

Stephen MacDonald (Chair & Secretary)	smacdonald500@btinternet.com	860246
Ray & Sue Blazdell		860462
Victoria Ramsay		860251
Tessa Youell		860368
Sally Hawke (Advertising)	sally@hawke-consulting.co.uk	861363
Carole Marits	Carole.marits@btinternet.com	860293

Thank you to Sue Blazdell, Maggie and Jim Duffy, and Tessa Youell, for producing this magazine and to Ed Treadwell and helpers for distribution.

CLOSING DATE FOR COPY is the 10th of Month

For all enquiries, our contact email is: cw.magazine@hotmail.co.uk

Please submit your copy to the email address above. It is important your articles are submitted in MS Word using an A5 template and font Times New Roman size 11. If you do not have access to a computer, please contact the magazine secretary on the phone number above to arrange for your article to be typed by one of the team. *The editors reserve the right to omit, amend or condense any item submitted for publication. The views expressed in this magazine are not necessarily shared by the editors or the magazine team. Any article printed in this magazine may be reproduced on the Chilbolton or Wherwell websites. Contributors who do not wish their material to be published on the websites must specify this at the time they submit their article.*

AD-HOC ADVERTISING

The Chilbolton & Wherwell Magazine can publish a limited number of 'ad-hoc' adverts each month at £25 for half a page. This replaces the old system of inserting flyers in the magazine. Adverts should be emailed to me before the 10th of the preceding month, ideally in a word document or jpeg format. I can be contacted on 01264 861363 or sally@hawke-consulting.co.uk.

Sally Hawke

Church Matters

The Downs Benefice

The Revd Juliet Montague, BTh (normal day off: Monday)

Curate: The Rev'd Stuart Rason, The Rectory, Chilbolton Tel: 860258

Benefice Administrators: Vanessa Denham & Maggie Hobbs

'The Downs Benefice' Office, The Rectory, Church Lane, Littleton, Winchester

SO22 6QY Tel: 01962 880845 email: office@downsbenefice.org.uk

The Benefice Office is open Monday to Friday 10am to 3pm

ST PETER AND HOLY CROSS, WHERWELL

Churchwardens	Pam Prince	4 Manor Cottages, Fullerton	860441 w.prince04@tiscali.co.uk
	Anna Lipa	Chute Cottage, The Old Hill	860879 anna@stefanlipa.co.uk
PCC Treasurer & Gift Aid Sec	David Ball	25 Colley Close Winchester, SO23 7ES	01962 868816 davidnlisa@btinternet.com

ST MARY THE LESS, CHILBOLTON

Churchwardens	Lawrence Wild	Abbots Leigh, Village Street	860358 wildl@waitrose.com
	Ros Rason	The Rectory, Chilbolton	860258 rosrason@hotmail.co.uk
PCC Secretary	Sheila Laughton	Eze, Birch Grove	860460 sheila663@btinternet.com
PCC Treasurer	Michael Payne	Dancing Ledge, Fullerton Road, Wherwell, SP11 7JS	860296 michael@mipayne.f9.co.uk
Gift Aid Sec	Philip Harrison	Four Winds, Drove Road	860201
Choir Leader	Sue Batchelor	1 Room Cottages	860307

Flower Rota – February

St Mary the Less Chilbolton

Feb Lesley Brown 4, 11 Feb Mrs Henderson

St Peter and Holy Cross Wherwell

18 Feb Mrs Gee

No Flowers during Lent

From the Church Records

Chilbolton

Funeral

- 30 November (Burial of Ashes) - Mary Tierney
- 13 December - John Shrimpton
- 17 January - Jean Tiller

(continued on p.3)

From the Church Records *(continued from p. 2)*

Baptism

27 November - Georgina Thomas

Wherwell

Funerals

5 December - Amelia (Mila) Tuke

20 December - Pearl Coleman

5 January - Adrian Liddell

6 January (Burial of Ashes) - Charles (Charlie) Daubney

Baptism

15 January - Savannah Cropper

Lent study

This Lent we have chosen to follow a five session course looking at the Beatitudes (otherwise known as the sermon on the mount). The principles embodied in the Beatitudes are very challenging for us today, and I hope that this course will encourage us all to examine our lifestyle in the light of Jesus' radical teaching and to live out these 'kingdom values' now.

We plan to run the course through the housegroups, with some additional groups as necessary. The study book costs £4.99 so if you are interested please contact the Benefice Office (01962 880845) who will order them. If you are already a member of a housegroup you may want to continue with them, or perhaps enjoy a change, if you have specific time requirements, eg a group that meets during the day, please tell Vanessa or Maggie. They will also ask for your email address so that we can keep you updated. I am hoping that you will enjoy this opportunity to meet and share with people from around the Benefice.

We will be launching the series with an event on Shrove Tuesday, 21st February at 7.30pm in Crawley Village Hall. We hope that all will then come together at the end in Holy week for our special services.

So that the books arrive in time please could you place your order through the Benefice Office by 10 February 2012.

Juliet Montague

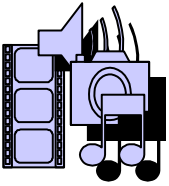
THANK YOU...

... to all those wonderful helpers who made cakes, jams, chutneys, etc., for the Wherwell Christmas Fayre. Thanks to all your generous donations of tasty, tempting delights. The CAKE STALL was a big success ... earning £150!!!

Thank You so very much.

Judy and John Conte

Church Services February 2012					
	St Mary the Less Chilbolton	St Mary's Crawley	St Catherine's Littleton	St Stephen's Sparsholt	St Peter & Holy Cross Wherwell
Wednesday 1st February					
Holy Communion			9.30am		
Westholme			2.30pm		
Sunday 5th February The Third Sunday before Lent					
Holy Communion					
Family Communion			10.00am	10.00 am	
Common Worship with HC					10.00 am
Morning Worship		10.00 am			
Evensong	4.00pm				
Wednesday 8th February					
Holy Communion			9.30 am		
Sunday 12th February The Second Sunday before Lent					
Holy Communion				8.00 am	
Morning Prayer	10.00 am				
Family Communion Sunday School @ Crawley		10.00 am	10.00am		
Welcome Worship				10.00 am	
Evensong					6.00 pm
Wednesday 15th February					
Holy Communion	10.30am		9.30am		
Thursday 16th February					
Flowerdown HC			2.30pm		
Sunday 19th February The Sunday next before Lent					
Holy Communion		8.00 am	8.00am		
Morning Worship			10.00 am		
Family Service					10.00 am
CW Holy Communion	10.00 am				
Matins				10.00 am	
Wednesday 22nd February Ash Wednesday					
Holy Communion			9.30 am		
Communion with Ashes			7.30pm		
Saturday 25th February					
House Communion			10.00am		
Sunday 26th February The First Sunday of Lent					
Holy Communion					8.00 am
Family Service	10.00 am				
Family Communion			10.00 am	10.00 am	
4 th Sunday Worship with Sunday School		10.00 am			
Peace & Healing			6.00pm		
Wednesday 29th February					
Holy Communion			9.30 am		
Meditation			7.00 pm		



The Movies are back!!!

CHILBOLTON VILLAGE HALL MANAGEMENT
COMMITTEE

Proudly Present

TINKER TAILOR SOLDIER SPY ⁽¹⁵⁾

Starring Gary Oldman and Colin Firth

In the bleak days of the Cold War, espionage veteran George Smiley is forced from semi-retirement to uncover a Soviet agent within MI6's impenetrable echelons

In Chilbolton Village Hall

Friday, 3rd February at 7.30 pm

Doors open 6.45 pm

Tickets £5.00 in advance or £5.50 on the door (subject to availability)

Price includes tea/coffee and biscuits

Wine and choc ices will be on sale

To book your ticket, please ring Maureen Treadwell 860380,
Beryl Lawrence 860618 or Sheila Laughton 860460

Wherwell
Singers

Spring Concert
Saturday 21st April
St Peter and Holy Church, Wherwell



Saturday 28th April, St Peter's Stockbridge
Programme includes Handel's Zadok the Priest, Faure's Cantique de
Jean Racine, Bruckner motets and English part songs.

Tickets: £7 (£5 concessions)

Why don't you visit the Wherwell Singers' new Web Site

www.wherwellsingers.org

TEA AFTERNOONS and SING-SONG TEA PARTY

Early in the year TVBC held a 'Community Conversation' to find out more about community led activities and other facilities available in villages. As a result of this, working together with Age UK, we started to hold a monthly tea afternoon in the White Lion. The tea parties have proved popular, with regular attendance by several Wherwell residents and a good turnout from both Longparish and Barton Stacey. We would warmly welcome more people from Chilbolton at the **next Tea Afternoon on Monday 6th February**. The cost is £2 which includes unlimited cups of tea or coffee with home made scones and cream or cake.

When told by some of the Longparish 'Recycled Teenagers', that they had very much enjoyed a trip out for lunch followed by a sing-song, we decided to rise to the challenge and we are now planning a **Sing-Song Tea Party on Tuesday 21st February in Wherwell Village Hall at 2.30pm** - admission £2.50. The Test Valley U3A choir are coming along to join in the singing of well loved songs from the 40s and 50s. Please do come along and bring your friends. If you need transport let me know and we'll try and help.

Jane Andrews Tel: 01264 860635 E mail: flyjohnandrews@aol.com

WHERWELL HOME GUARD CLUB

Still no information has been given to members regarding the acting committee's plans for the club and the premises. After all the hard work of members, over the years, running, maintaining and upgrading the facilities at the club, it's a shame that it remains closed when there are existing members wanting to form a committee and to re-open and run the club.

The meeting, held at the end of November, was attended by more than sixty people which included 30 club members. In spite of being invited to come and give an update to the members it was disappointing that none of the trustees or any members of the acting committee came along.

After seeking legal advice, a further letter has been delivered to Talbot Walker, the solicitors that it is believed have been instructed by the acting committee. It states that as the acting committee was not re-elected for 2011/12 it has no powers to do anything other than call a members' meeting and that the trustees and acting committee members should be aware that they risk personal liability to pay costs and compensation should such a sale proceed.

Jane Andrews, Andrew Flanagan and Cliff Goodall

Chilbolton & Wherwell Wildlife

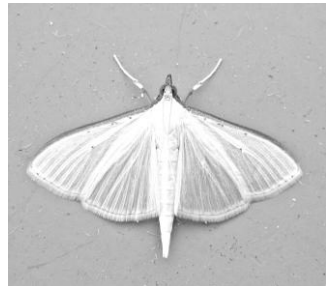
At the time of writing, my expectation of cold winter weather hasn't yet materialised. In fact, the winter has been particularly mild so far. Our wildlife responds accordingly, and for the first time in over twenty years here, there were holly berries still plentiful on our tree at New Year. The redwings have now taken most of the berries from the top branches, but in most years every single one has been eagerly devoured by Christmas. Similarly, you'll all have seen how quickly the snowdrops and crocuses are shooting up – some of you probably had them flowering in early January, and a friend sent me a photo of a daffodil flowering in Longparish on New Year's Day; admittedly it was in a relatively sheltered sunny spot, but it was outdoors. My own best winter flower photo was of a Yellow Iris in full bloom along the banks of the Test at the end of November. Apparently nobody told it that it should only be flowering in May and June!

I mentioned last month that if the mild weather, I'd be trying to find the very rare Plumed Prominent moth. Well I had no luck with the Plumed Prominent, but at the end of November our moth-trap produced some fascinating moths at a farm near Hurstbourne. It was a wet night, and there was low cloud and fog when we went there in the morning, so we were amazed to find lots of the little orange-brown moths, known as Rusty-dot Pearl. The name describes them well. They are tiny moths with a wingspan of only about 20mm. They don't breed in this country but migrate with the wind from France. It's not unusual to catch a few here in late summer and autumn, but on this particular night, there were over sixty in the trap – numbers not previously recorded in Hampshire. Amongst the Rusty-dot Pearls, were three other little moths even more interesting. A tiny bit larger, these were the translucent white *Palpita vitrealis*, or Jasmine Moth. These moths come all the way from the Mediterranean, where their larvae are pests in olive groves. They are sometimes found on the south coast, but rarely reach north Hampshire. The weather conditions on this particular night, with warm damp southerly winds, must have been just right for these tiny moths to have travelled huge distances and across the English Channel.

West Down Working parties

With the help of the Ranger's brush-cutter, this winter we've made great progress with managing the scrub re-growth on the steep downland slopes. The slopes are beginning to look good, but there's still more to be done! The next task days are Sundays 26th February & 25th March. Do come and join us if you can, even if only for an hour or two. Tools and gloves are provided, and also drinks and biscuits. Meet 10am at the top car-park.

Glynne Evans (hantsbto@hotmail.com)



Farewell to Reverend Stuart



Sunday 11th December was a big day in Chilbolton, with a Downs Benefice farewell lunch for the Revd. Stuart Rason after more than three years as Curate, training under Juliet Montague and living in Chilbolton Rectory with Ros and the boys.

Stuart and Ros quickly became established in the Chilbolton and Wherwell communities, both playing a large part in village life. Stuart was much involved with the schools in the Benefice and was an important contributor to all aspects of church

life across the five villages in support of Juliet and colleagues. A firm favourite with children, his magic tricks in church and his really terrible jokes will be remembered for some time to come!

After a Benefice service led by Stuart in a packed Chilbolton church, Stuart, Ros, Josh and Tim were guests of honour at lunch in the village hall, which had to cope with rather more people than it was really designed for! Following an excellent lunch – and a speech from Juliet - Stuart, Ros and the boys were all presented with gifts by Caroline Horrill, as Chairman of Benefice Council, as a reminder of their time with us.

As you will all know, Stuart has taken up a Commission as a Chaplain in the Royal Navy and is at the moment being trained in the ways of the Senior Service at Devonport and Dartmouth, before being let loose on an unsuspecting world.

We are all very pleased for Stuart in his new career, and for Ros and the boys in their exciting new life. They will continue to live in the Chilbolton Rectory until they get organised and Ros, Tim and Josh will therefore be with us in the village for some while yet. As for Stuart - Bon Voyage !

Andrew Kent

Disposal of Dog Mess

Complaints have been made about bags of dog poo being thrown into the trees in the vicinity of Beech Grove. This is totally unacceptable and it is punishable under the Clean Neighbourhood and Environment Act 2005. The dog warden has been informed and will be monitoring the situation. If you know who is responsible please inform the dog warden. Tel: 01264 368463

Jane Andrews Wherwell Parish Council

Tribute to Pearl Coleman

Pearl, who was the oldest village resident, actually born in Wherwell, sadly passed away 1st December 2011, less than 30 days before her 90th birthday. Pearl Taylor was born in Cottonworth Farm Cottages on 30th December 1921, and apart from a couple of years when the family moved to Romsey, she lived in a cottage in Fullerton Road, and then moved into Toveys Cottage in the High Street, where she spent most of her life until moving to Chant Close in 1983.



Pearl with grandson Robert (July'04)

Pearl attended the old Church School, up Old Hill, and then the new School in Longparish Road, when it opened. She left school at 14 and initially did housework in Andover for 8 shillings (40p in current money) a week and at 16 went to work at Laverstoke Paper Mill, and then Overton Mill when Laverstoke closed.

In 1940 she married Les Coleman, and her son Roderic was born in 1945.

She took an active part in village life and helped with the scoring at cricket matches

like her father. Her mother would make the cricket teas, and her cousins, the Rowles' boys would play in the cricket team, quite a family affair!

When Roderic married Sue they had three children and her life then revolved around the grandchildren, enabling her to enjoy even more her main hobby of knitting by creating some wonderful outfits for them.

She also enjoyed taking them for walks through the woods especially at Bluebell time and all three grandchildren have very happy memories of these walks. As they grew up and got married so the Great grandchildren came along (ten in all) and she loved their visits, even when they got rather hectic with two-year old twins.

Sadly in her later years she suffered with arthritis and was unable to get out and about very much, but would love to stand at the bungalow window looking at the gardens and passing the time with Ernie Rowles or reminiscing with Queenie Smith when she popped in for a visit. Phyllis was also a frequent visitor and Billy (the dog) was a firm favourite following the loss of her beloved cat Henry at the grand old age of 25.

Pearl is now reunited with her beloved son Roderic, and will be sadly missed by all the family.

Sue Coleman

Wherwell School Parent Teacher Association **Helping to help your children**

The children and parents of Wherwell Primary School have been very busy during the second half of the Autumn term. In addition to a full and rich curriculum, including topics on the Tudor dynasty, old toys and the geography of Hampshire, the children were joined by members of the local community for their Remembrance Day and Christingle services.

As we got closer to Christmas the children were buzzing with excitement. After visits to the Lights to see A Very Snowy Christmas, and the Haymarket in Basingstoke for Beauty and the Beast, the infants and juniors produced their own performances of Christmas with the Aliens and A Creepy Crawly Christmas respectively. They also enjoyed a lovely Christmas lunch, parties, a karaoke evening and the carol service. There was a festive atmosphere all around the school.

The theatre visits were made possible through fundraising by class 5 and a generous grant from the PTA, who have been working hard over the past months with a second hand uniform sale, a lovely Christmas coffee morning and cake sales. These events have raised well over a hundred pounds.

We hope that after such a busy time the children have had a happy and restful break and come back full of energy for another exciting term.

The PTA will start the year with a textile recycling initiative from 9th January, and a great woodland working party on 29th January. There are lots more exciting activities to follow, including a quiz night on the 10th of February, a family fun run on 29th of April, and a camping weekend in June. We hope to keep you informed so that you can join in the fun and support our fundraising efforts. If you would like to get involved in any of the fundraising initiatives or want to know more, please contact the school on 01264860384 or Mrs Salazar Lewis on 01264393003.

If you would like to know more about our lovely school, please visit our website at www.wherwell.hants.sch.uk.

Save this date!

On Saturday May 12th, 6pm at Wherwell Priory and Church, there will be an exciting event, a Musical Pageant, 'The River is Flowing' – a history of Wherwell Abbey from its origins to the present. It will feature the Wherwell Singers, the Spotlight Singers, the Craig/Morgan/ Robson Trio as well as children from Wherwell School. The music is compiled and directed by Professor June Boyce-Tillman, University of Winchester. Proceeds in aid of the Church. It will form part of our Queen's Jubilee celebrations. Programme and ticket information to come...

Mary Grey, for the Pageant Committee.

Mince pies, Mulled Wine and Minus Three

Keeping upright on the frosty slopes of the West Down was made even more challenging when the West Down volunteer team who turned out on the morning of 18th December were offered mulled wine and mince pies by Bradley Brown, the local ranger. Thankfully most stuck to coffee so any apparent secateurs-wielding squiffiness observed by passers-by was, of course, entirely attributable to the slipperiness underfoot.

Despite the bracing weather, a lot was achieved and gradually the brush and scrub are being cut back which should mean that in the summer, the grazing animals will be able to keep the weeds and thorn bushes at bay. The bets are on as to whether the chubby little Exmoor ponies will be persuaded to forego the sweet grass shoots in favour of thistle and thorn. Perhaps any local horse whisperers can talk up the benefits of nettles ... Red Rhum and Bellabriggs were Shetlands before they tried thistle etc.

Our next sessions on the Down are on 26th February and 25th March – or let Glynne Evans know on hantsbto@hotmail.com if you'd like to go on the mailing list. We meet at 10am at the top car-park, or if you can spare an hour or two later in the day, do come along and find us. A lot can be achieved by a lot of people doing a small amount – all ages are welcome so bring the family. We look forward to seeing you.

Maureen Treadwell



Chilbolton Neighbourhood Watch Report

Apart from some pranksters knocking on windows at 1.30 am on New Year's Day, we seem to have had a very quiet and peaceful holiday period. Long may it remain so.

I would like to bring The Blue Lamp Trust to your attention. This is a charity which offers a free security service to the over 60s and vulnerable people. We asked them to check over our house and while the Trust confirmed we were covered for locks and alarms, the gentleman who called suggested and installed extra window locks. He also advised about security lighting in the garage. If a fire alarm is needed they will install it too.

The number to ring is 023 9289 9056 or visit the website www.bluelamptrust.org.uk The service can be a little uneven, depending on who turns up in the little white van with the Blue Lamp Trust logo on the side. I would suggest that those who are interested ask for a full security survey at the time of making the appointment. They carry all their equipment in the van and will probably have anything you require. We found the service most helpful.

Maria Watson, tel: 860415 e-mail: mwatson.cottage@hotmail.co.uk

The Voice of the Church again rings out

Following the successful installation of the Ellacombe Chiming Apparatus, the peal of five bells of St. Peter and Holy Cross Wherwell, had their inaugural ring on the evening of December 10th ahead of the Wherwell Singers concert.

Our team of chimers rang the bells several more times over the Christmas period and have received numerous comments expressing pleasure and delight at hearing the bells ring out again after so many years.

In future the bells will be rung ahead of each Sunday morning service, at weddings if required and on other special occasions. Additionally there will be practise sessions every 1st and 3rd Tuesday of the month between 7:00pm and 8:30pm. We are always on the look out for new members to join our chiming team so if you are interested give me a call on 01264860575.

The 'rigidity test' carried in early December indicates that the work done on strengthening the spire and bell frame during the restoration work has been successful to such an extent that the bells as they are, can now very occasionally be rung full-circle by experienced ringers. However if we want to do this on a regular basis then as previously indicated there will need to be further work on the frame and the complete refitting and rehangng of the bells which will cost in the order of £30,000.

However, ahead of any decision in this regard the priority, next phase and challenge for the Church Restoration Project Team is the possible enclosing and refurbishment of the vestry and attached service area, with the installation of a new dual heating system to heat the Church and vestry independently. This is expected to cost in the region of £80,000 of which £30,000 has already been raised. We will keep you informed on the progress of this next phase.

David Etchells – for the Church Restoration Project team

Stop press – To date we have received requests to ring at four weddings during 2012.



Neil Thomas of
Whitechapel Bell Foundry
working on the installation



*Chiming Team members, Sue Blazdell
and Liz Blakemore practising Plain
Bob Minimus*

CPRE Events

The Campaign to Protect Rural England (CPRE) has received a Government grant to provide advice, guidance and encouragement for communities to engage with the planning system in their local area.

Two events have been organised to meet the needs of the Hampshire community. We would very much value your help to inform your community of the events.

Event 1 will be a fun and informative half-day workshop, exploring the new opportunities for you from the Localism Act.

We will provide an introduction to the existing planning system and explore the new ways you are able to engage with and influence decisions for your community. The event takes place on Thursday 9th February from 12-4pm at Itchen Abbas Village Hall and includes FREE lunch and refreshment. "From a complete novice to someone wanting to expand their knowledge, we hope to show you the value of getting involved in shaping the future of your local area."

Event 2 is designed to expand on the first seminar and will explore the importance of engaging your community with the planning system. The day will comprise of more detailed workshops seeking to maximise the influence that communities can have on the future of their area, as well as how to influence local plans and how to develop neighbourhood plans.

The event takes place on Thursday 8th March from 10am-4pm at Itchen Abbas Village Hall and includes FREE lunch and refreshment.

The event aims to appeal to representatives from different amenity groups and organisations, parish/ town councillors & those who wish to take an active role in local planning. We also hope that those who wish to develop their knowledge further will attend our 2nd seminar.

This is your chance to find out about the opportunities which Localism presents for you

All events are FREE to attend. Please book your place by calling Becky French on 01962 779185 becky.french@cprehampshire.org.uk

Midday Mums

This month we will be meeting on Monday 20th February, at Wherwell Village Hall 10.30-12noon. Come along for coffee and biscuits to meet other Mums in the villages and their little ones. The date for March will be Monday 19th.

Hope to see you.

Susan Ansell 860775

WHERWELL HISTORY GROUP



**WINCHESTER
WATERWAYS
ROMANS TO 19THC**

**AN ILLUSTRATED TALK BY
ELIZABETH PROUDMAN**



**FRIDAY 17TH FEBRUARY
AT 8.00PM**

**AT
COLONEL JENKINS'
MEMORIAL HALL
WHERWELL SP11 7JJ**

**ALL WELCOME = ADMISSION £3.00
TEA/COFFEE AND BISCUITS INCLUDED**

Chilbolton Parish Council

I am excited about the forthcoming year as already there is a great deal that we have planned to do and I hope all the projects will be completed to everyone's satisfaction. Having the Queens Jubilee as a spur to action we will complete the following items to mark the event. A new flowering-tree hedge around the allotments, more planting on the Coronation Green area to ensure that the approaches into the Village are improved. The planting of a grove of trees, designed by Jennie Hamilton in the corner of the Memorial Playing fields to the east of the rarely used reserve football pitch. We are hoping to plant a good-sized tree for every community activity within the village, such as the WI, and would hope that a contribution of £50 per tree would be made by each group. Within the grove will be seating areas for quiet contemplation which will look out over the Common and the playing fields. I hope that we can release the plan soon, but in the meanwhile do contact me with your thoughts about this matter. On areas around the eastern boundaries which we left uncut last year we will attempt to plant wild flowers to grow within the wild grasses that abound here.

The children's play area should be completed in the early spring using pieces from the grey poplar soon to be felled together with factory made units suitable for children under 12 years old. Soon the legal problems at Grindstone Green will be matter confined to the dead files after almost a decade of cost to the Parish.

The two telephone boxes will be repaired and repainted and a use must be found for them, maybe an information centre or free book exchange are two of the suggestions, but further ideas are sought.

The Common will continue to be improved. Making it seem natural and unspoilt requires constant work to maintain its beauty.

We could well be taking over a long lease on West Down if we have the full support of the village. If we do take over the management of West Down then there are amazing things we can do here to benefit the whole village.

The Core Development Plan as proposed by TVBC would make it easier for development to take place in the heart of the village. All our suggestions have been ignored and we might well have to engage a barrister to argue our case at a public hearing some time in the future.

This year on general housekeeping matters we hope to get HCC to improve its standard of care in those areas of the Village they maintain whilst we will clean the benches on Village Street, cut the grass to a higher standard and improve Stocks Green whilst at the same time maintaining the tone of the village. Improvement to the allotments will continue as the demand for plots increases.

Alan Crisp

Dear Friends,

Writing this letter in the early days of January it is hard to focus on what will be happening in February and March but Lent will soon be upon us once again and that made me think of two young girls, Charlotte and Victoria Fairman who, when they were aged 8 and 10, decided to give up chocolate not just for Lent but for a whole year. They were inspired by their cousin and undertook their task with great determination, not even a dusting of cocoa powder or a chocolate chip would pass their lips for a whole year. I need to say at this point that at least one of them is a chocoholic; they were not forgoing something they could easily do without. Recently I asked them how they felt at the end, what difference it had made to them, and their response was a real sense of achievement that they had been able to do it, and the knowledge that they could do what they put their minds to. In other words they had tested themselves and found an inner strength they did not know before.

This is surely what Lent is all about. When Christ went into the wilderness to spend time by himself to fast and pray, his purpose was to test himself for his future ministry. It would have been no use embarking on the path that would lead him, within a few short years, to Jerusalem and an horrific death, if he did not have the steadfastness and stamina to see it through to the end. By proving himself able to stand firm in the face of temptation he found his inner strength and emerged from the wilderness resolute and determined to undertake his calling.

For most of us it is not so much what we give up for Lent that tests us, but the challenges and difficulties we face along the way. It is in our times of pain and suffering that we discover strength we never knew we had, and find where our bottom line truly lies. This is how we grow in stature and become more truly the people we were designed to be. Lent is for this kind of reflection and challenge, rather than a temporary doing without things we like just to enjoy them all the more a few weeks later.

Speaking as one who finds it very hard to stick to a diet for more than a few weeks, I have great admiration for Victoria and Charlotte. Not many of us test ourselves this far when so young. But perhaps, in the difficult times that seem to lie ahead in this country, we can be inspired by them to stretch ourselves a little further and dig deep into the strength we often are unaware of, on our journey towards being the people God intended us to be.

*With love in Christ,
Juliet*

Chilbolton Players Present

Treasure Island

The Panto



Chilbolton Village Hall

Friday 17th February at 7.30
Saturday 18th February at 2.30 and 7.30



Refreshments ♦ Bar ♦ Raffle

Tickets: Adult £7.50 Child £5.00

available from the box office from 16th January
Richard Richardson, Digby Croft Cottage, Winchester Street, Chilbolton 861082



AUCTION OF PROMISES

7.30 PM on 24 March

in

WHERWELL VILLAGE HALL

A full list of promises will appear on www.wherwell.net

Supper included in ticket price
2 bottles of wine per table + bring your own

Tickets £8 per head or a table of 8 for £56

Tickets and reservations from
Anna Lipa on 860879

CHILBOLTON AND WHERWELL CARE GROUP

The group, currently consisting of a team of 24 voluntary drivers, provides much needed inexpensive transport to doctors, dentists, hospital appointments and other important journeys where public transport is not available or unsuitable. We occasionally make minor diversions to the shops for important victuals or to pick up prescriptions and the like. The aim is for each driver to do no more than two journeys a month, although this does not always work out!

The donations from our customers are dependent on journey distance. The money collected is then given to charity, the drivers taking no expenses. The journeys have been mainly to Andover, Stockbridge and Winchester with a few to Southampton, Broughton and Basingstoke. The donations are given to a local and very worthy charity, 'The Countess of Brecknock Hospice' Andover, and amount to an average of £1000 per year.

Anyone needing the services of the care group please phone us. The care group numbers can always be found in the rear of our Community Magazine.

If anyone is interested in joining the team and able to spare a couple of hours a month, please get in touch. The more volunteers we have the easier it gets.

Peter Ward (860528)

Chilbolton Horticultural Society



"Show Question Time"

February 28th at 7:45



We have invited several experts in growing and showing fruit and vegetables.

An opportunity to ask our show judges questions

- ◇ How to grow a show winning vegetable
- ◇ Show winning marmalade
- ◇ The perfect rose

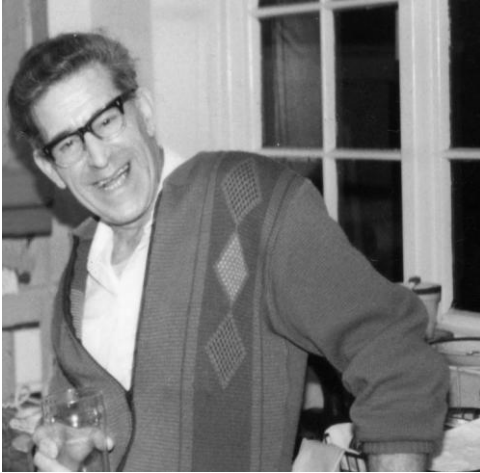
Everyone welcome. Free entry but raffle to cover our costs.

If possible, please submit your questions in advance.

Further details from Sheila Evans: 860697

Tribute to Charlie Daubney

Charles William Daubney, my cousin, was born in Romsey on 6th November 1933. He was the son of my father's sister. Together with his older brother Eddie, he lived with his grandparents. When his grandmother died in 1942, both boys came to live with my family at Greenwich Cottage. Charlie attended Wherwell school, before moving onto Andover Secondary school for boys.



After leaving school, Charlie had short spells of work on a farm, in a laundry and at SCATs as a storeman; where he gained his HGV licence.

He then settled into being a long distance lorry driver for Smiths, delivering animal feed all over the country. He took lodgings in Andover with his friend Vic, where he remained for the most of the rest of his life.

Charlie was a quiet gentleman, who enjoyed the simple pleasures of life. In later years he had heart by-pass surgery and with his health generally failing he went to live at Copper Beeches, Andover, where he died. His ashes have been interred in the grave of Eddie and Freda Daubney in Wherwell.

Phyllis Harding

Thank you

This is to say a very big 'thank you' to all the wonderful people of Chilbolton who have sent cards, phoned me and visited me in hospital and at home - since my unfortunate accident on 2 December. My daughter was so impressed by everyone's kindness and said what a lovely village Chilbolton is. I am so glad I came to live here thirteen years ago. I have made many friends and have tried to be involved in most of the village activities. I am now well on the mend after my hip operation and hope to return to normal before too long. Meanwhile, my heartfelt thanks go to you all for thinking of me at this time.

Dawn Rickatson

Diary Dates

February

3	Film: Tinker Tailor Soldier Spy	CVH	6.45 for 7.30pm
4	Coffee am	WVH	10.30am
6	Red Garter	CVH	7.30pm
6	St John Eye Hospital Lecture	U.Claf VH	8.00pm
6	Afternoon tea	White Lion	3.00pm
7	Chilbolton PC meeting	CVH	8.00pm
7	Hangar Door	WPF	8.00pm
9	CPRE workshop	Itchen Abbas	12 till 4 pm
		Village Hall	
9	Age Quiz Night	Town Mills	7.30pm
10	PTA Quiz and Curry night	CVH	7-11pm
17	Chilbolton Players:		
	Treasure Island	CVH	7.30pm
17	Wherwell History Group	WVH	8pm
18	Coffee morning	CVH	10.30am
18	Chilbolton Players	CVH	2.30 and 7.30pm
20	Midday Mums	WVH	10.30am
21	Sing Song tea party	WVH	2.30pm
21	Lent Study Launch	Crawley VH	7.30pm
21	WI Meeting: card making	CVH	8pm
25	Eastern Feast		
26	West Down WP	top car park	10.00am
28	Wherwell Wives	WVH	8pm
28	Chil Hort Society	CVH	7.45pm

March

3	Coffee am	WVH	10.30am
6	Chilbolton PC meeting	CVH	8.00pm
8	CPRE event	Itchen Abbas	10.00am-4pm
		Village Hall	
10	Jumble Sale	CVH	2pm
13	Wherwell PC	WVH	7.00pm
13	Red Garter	CVH	7.30pm
16	Wherwell History Group	WVH	8pm
19	Midday Mums	WVH	10.30am
20	WI Meeting: Florence Nightingale	CVH	8pm
24	Auction of Promises	WVH	7.30pm
25	West Down WP	top car park	10.00am
27	Wherwell Wives	WVH	8pm

WHAT'S ON IN THE AREA

Theatres:

9/02 Joan Rivers, Central Studio Basingstoke 7.30 pm £5.00.

www.centralstudio.co.uk Tel 01256 418318

10/02 & 11/02 Science Museum Live on Tour 1.30 & 7.00 pm

£14.50 + concessions. Theatre Royal, Winchester

20/02 Scratch Shakespeare – The Comedy of Errors 7.20 pm

£5.00. Theatre Royal, Winchester . www.theatre-royal-winchester.co.uk

Tel 01962 840440

25/02 Swan Lake, Vienna Festival Ballet 2.30 & 7.30pm

£17.50 to £13. The Lights, Andover

26/02 Comedy Club in the Arena 8.00 pm £9.50 on the door. The Lights,

Andover www.thelights.org.uk Tel 01264 368368

Music:

9/02 Katherine Jenkins 7.30 pm £65.00 to £27.50 Bournemouth

International Centre www.bic.co.uk Tel 01264 368368

4/02 Salisbury Cathedral Choir – Voice Trials for Girls

www.salisburycathedral.org.uk Tel 01722 555120

4/02 Winchester Cathedral, The Best in Youth Music in Hampshire

7.30 – 9.40 pm £12.00 & £6.00 www.winchester-cathedral.org.uk Tel

01962 857200

Other events:

11/02 to 17/02 Wildlife on the River Itchen Free Winchester City Mill

www.nationaltrust.org/winchestercitymill Tel 01962 870057

21/02 & 13/03 Family History for Beginners 6.00 to 8.00 pm £10pp

Hampshire Records Office, Winchester www.hants.gov.uk/archives

23/02 Titanic Inheritance 11.00 am Lunch Lecture £19.95

Hillier Gardens

26/02 An Eye for Winter Photography 10.00am to 4.00pm £45

Hillier Gardens www.hilliergardens.org.uk Tel 01794 369317

Country Markets:

Stockbridge market - Town Hall every Thursday, 10.00am – 11.45am.

Farmers' Market:

05/02 – Romsey

12/02– Winchester

19/02 - Andover

26/02 - Winchester

www.hampshirefarmersmarkets.co.uk. Tel 01420 588671

Wherwell History Group

The Time Capsule and the Bygone Calendar certainly contributed to a hectic end to 2011. It is now mid-January, and there remain only four Calendars unsold, out of a print run of 279. So, a very big thank you to everyone who bought a calendar and to everyone who helped sell our calendars, especially Waterstones (Andover), Chilbolton Stores, The Mayfly, The White Lion Inn, William Stewart Hair Design, and Lane End Kitchenware (Stockbridge). We are almost certain to produce another calendar for 2013, perhaps in full colour and perhaps using a people and places theme.

We have pleasure in reminding readers about our forthcoming programme of talks, prior to our AGM on May 18th. Meetings take place at Wherwell Village Hall, starting at 8.00 pm. Admission is still only £3.00 for guests (free to members).

17 February	Elizabeth Proudman	Winchester Waterways (Romans to C19 th)
16 March	Phoebe Merrick	Lord Palmerston and Romsey
20 April	Barbara Yorke	Anglo-Saxon Nunneries in Hampshire

The speaker and subject for April has been specially chosen as a ‘warm-up’ event for the Wherwell Pageant on Saturday 12th May. “The River is Flowing” will tell the history of Wherwell Abbey, in music and words, from its origins to the present day.

Our Open Meeting on December 9th was most interesting. Mike Gee talked us through some slides featuring the Taylor and Young families. They were donated by Mike Barnes from Eastleigh, whose grandmother Doris lived at 43 Fullerton Road (one half of the house where Diana and Mark Dyer live). Doris (née Young) was married to Harry Taylor, the postman. Doris had brothers, Nobby and Fred, and a sister Lilian. Doris’ parents lived in Church Street, adjacent to the river (now called Heather Cottage).

Doris’ brother Fred (see picture) rented the house in Church Street opposite the village hall, and kept cows and horses at the farm behind the bus shelter (now Kingsmill Cottages). He is the ‘Digger Young’ in the picture of cows being driven past the war memorial, back to the farm for milking.

(Continued on p.23)

(Continued from p.22)

Also at the Open Meeting, Sue Coleman shared with us some press cuttings and photos of the Wherwell Cricket and Football teams. Sue has done a brilliant job of naming over 80 percent of the people featured. It would be nice to fill in the gaps. In past months, we have published similar photos, with incomplete captions, in this magazine. The number of such photos is growing fast, so a different approach is needed.

We have created special 'Photograph Archive' pages in the History Group section of the Wherwell website; please visit: http://www.wherwell.net/photograph_archive.htm and see how many faces you can recognise.



Sue Coleman also showed us a family Bible, which has been handed down from her mother-in-law, Pearl. The inside-cover leaf records various family births and deaths in the 1800's, finishing with "*Frederick Taylor born May 6th 1885*".

This is the second family Bible I have seen locally, and it was a common way of passing dates down through the generations. Perhaps there are many more similar Bibles being carefully preserved by present generations of villagers. If anyone would like to share their version of these rudimentary family trees, then please email us at wherwellhistory@gmail.com or by telephone (01264 860560).

Andrew Flanagan

WHERWELL PARISH COUNCIL

In view of the current economic situation the PC has agreed that the precept for the year 2012-13 will remain unchanged at £7.5K

Regarding the proposed Chant Close footpath, progress is being made, but very slowly! HCC has still to resolve the dispute over the legal costs with Punch Taverns but at least an agreement has been reached with Testway Housing.

Little progress, however, has been made regarding the complaints that we passed on to Testway Housing, on behalf of Mill Court tenants. Their service charges are incredibly high and some have been charged incorrectly since the tenants first moved in five years ago.

Testway claim that the PC is responsible for repairing the lights on the Chant Close steps, but they have no paperwork to substantiate this claim. Finally they did agree to repair the lights on this occasion. There are several deep potholes at the entrance to Beech Grove but Testway claim they do not own the first 20 feet of the unadopted road and therefore they cannot carry out any repairs. Following a site visit with them, they have been persuaded to contact the Land Registry regarding the ownership. If any owners of Beech Grove properties recall their solicitors making any references regarding responsibility for the upkeep of the road, when they purchased their property, will they please let me know.

According to the recent speed survey, the morning rush hour is when the most vehicles exceed the 30mph speed limit heading towards Winchester Corner, the average speed being 41mph. PC Jewell will continue to monitor traffic speeds throughout the parish on a regular basis.

HCC were asked, some time ago, to advise what they proposed to do to prevent repeated damage to the bridge at Winchester Corner. It continues to be hit every couple of weeks. Our requests for 'Road not suitable for HGVs' signs continue to be ignored and the temporary plastic barricade appears likely to remain a permanent feature. This is unacceptable, especially as the bridge is in the conservation area. We will continue in our efforts to find a solution to this and Cllr Gibson is to be asked to assist us.

The PC is considering its response to TVBC's Core Strategy & Development Management DPD Consultation Document.

Planning applications have been approved for 2 Kingsmill, Westover Farm, Chapel Cottage, Mill House and Carpenters Barn. Plans for alterations to Old Greenwich Cottages were supported and there were no objections to the retrospective application for the Chalk Pit.

Retrospective applications for two industrial units at Dublin Farm have been considered very carefully. The PC has supported one, as a B1 light industrial application, but we have serious concerns regarding future

(Continued on p.25)

implications for the other site, as it is being considered as a category B2 industrial application. TVBC are being asked to consider categorising the application as B1. The PC and local residents are not objecting to the current use of the site if some sound proofing adaptations are made and do not want the current tenant to have to move his business elsewhere.

I am sure that everyone who attended the topping out ceremony at the church will remember, for years to come, the incredible site of the beautiful clear blue sky, with the oldest steeple- jack in England, dangling off a rope, attached to the church spire. The committee organising the renovation and the fund raising comprised Anna and Stefan Lipa, David Etchells, David Ball, Judith Herridge, Anthony Ansell and Sir Michael Parker. They have done an amazing job but I understand there is still more to be done. Further fund raising initiatives are being planned in order that the next phase of improvements, including the heating of the church, can be done.

Father Christmas (Sean Hutton, John Andrews and Bill Pickett) and all the elves together with the staff who helped build and run Santa's Grotto, at the Andover Garden Centre, did a fantastic amount of work resulting in £3,548 being raised for the Playing Fields. Over 1700 children, together with Mums, Dads, Grannies, Granddads and other family members and friends enjoyed meeting Father Christmas and many children even had breakfast or tea with him! Well done to everyone who helped.

Volunteers are being sought to organise participation in the nationwide plan to light beacons on the 4th June to celebrate the Queen's 60th Jubilee. This could be a really memorable event particularly for local children. Plans are also being made to hold a village street party, and help with organising this will also be needed. We want everyone to feel they can contribute to making it a very special occasion and it would be especially good, to have some new recruits to help the familiar faces that are invariably seen helping out, whenever a village event is taking place. All offers will be appreciated so please consider volunteering. If you do not feel able to help physically, then any donations towards the cost of organising a memorable celebration would be welcomed.

Next PC meeting Tuesday 13th March at 7.00pm in the Colonel Jenkins' Hall.

Jane Andrews Chairman. Tel: 860635. Email: flyjohnandrews@aol.com

Tribute to James Hellier

I am proud to have been asked to write a tribute to my friend and neighbour, James Hellier, who sadly passed away on October 31st, after a short illness.

He came from a farming family in Somerset and in 1945 joined the Navy and spent a very dangerous time clearing WW2 mines from the sea. He then made the rather unusual decision to change his career and take up an Army commission in the Royal Signal Corps and was promptly posted to Suez, where he met and fell in love with Margo. They were married the following year – a marriage which lasted almost sixty years. They had three children - Paul, Lizzie and David who sadly died at a very early age.

James' rapid promotion in the Army meant they were always on the move living in twenty-seven different houses, from a requisitioned house in Germany, to a veritable mansion in Yorkshire where he was commanding the 24th Signals Regiment at Catterick. The reason for all these moves was because his career progressed with such speed, serving in England, Germany, Hong Kong and inevitably Northern Ireland. For his services in planning and organising the arrangements to mark the Queen's Silver Jubilee parade in Germany, he was advanced to CBE, from the OBE he had received for his regimental command and the MBE for his service in Northern Ireland. Somehow he found time for sport becoming the Army's National squash champion. Finally it was back to England as Major General in charge of Administration and Logistics based at Wilton.



James at Wherwell Proms 2010

After his military service he went to work, as he always said “in British Industry.” This was in fact for International Military Services being responsible for delivering British Military equipment abroad, making quite sure it performed as specified and that it was finally paid for!

His last piece of work was to chair the fund raising committee which raised £1.25 million for a major extension to the Museum of Army Communications at Blandford, a very fitting memorial for a man who had contributed so much to the work of communications in the Army.

(continued on p. 27)

(continued from p. 26)

When James and Margo became my neighbours seventeen years ago, they enthusiastically became part of our village life. Together they developed a complete country garden, beautifully laid out with flowers, fruit, vegetables, an orchard, a greenhouse... oh, and a lawn, which he fondly mowed with his trusty 25-year-old Hayter every week in the summer without fail, which of course reminded me that it was time to mow mine. Their garden is much admired at Open Gardens and at the Village Fete. He yearly went far and wide to persuade growers to donate plants and shrubs and collect them for his magnificent plant stall, which invariably raised several hundred pounds each year. James was a very keen member of CPRE and a dedicated governor of the local primary school. He was a regular Church member, enthusiastically helping to raise church funds.

James regularly attended Parish Council Meetings, where his sense of humour and enthusiastic input was very much appreciated. He took his task as our Church Street Flood Warden, very seriously, always making sure each house had adequate sand bags if a flood warning was expected.

I shall greatly miss my old neighbour and the clatter of the lawn being subjected to his strict standards.

Mike Gee



Afternoon Tea

The White Lion, Wherwell

Monday 6th FEBRUARY 3pm

And every first Monday in the month

£2.00 inc tea and cake. ALL welcome (regardless of age!)

Sing-Song Tea Party

Wherwell Village Hall

Tuesday 21st FEBRUARY 2.30pm Songs from the 40's and 50's

Accompanied by Ray Blazdell

All are welcome. Admission £2.50

Need transport? Ring 860635



Andover and District

**Warm your brain at Age UK Andover & District's Winter Quiz
Thursday 9th February, 7.30pm**

at

Town Mills Pub, Bridge Street, Andover.

£20 per team of up to 6 people

**Tickets available from Age UK office in Bridge Street
or ring (01264) 354425.**

Registered charity no. 1140927

Chilbolton Village Hall

We commence 2012 with high expectations of an exciting year – the Queen's Diamond Jubilee, the Olympics, but we will try to ignore any financial storms that may blow in! Not to be outdone, the Hall Management Committee has an equally appealing programme of events lined up.

We start on 3rd of February with our regular Friday evening film (Tinker, Tailor, Soldier, Spy - what a corker!) to be followed by a very special social evening. An "Eastern Feast" is being laid on with real Philippine cuisine prepared in the authentic way, 25th February. Tickets are available now; please refer to the separate advert in this edition for full details. Numbers are limited and pre-booking essential.

On 10th March our popular Jumble Sale takes place where, no doubt, lots of bargains will be found. Later and throughout the year there will be monthly walks of varying distances but none will be too demanding and hopefully all will finish at a cosy hostelry. Also we are mounting an Open Gardens Day and a gentle "Hunt the Clue" car rally that will involve identifying places with clues and general knowledge.

As ever, the monthly 100's Club draw will continue, usually in conjunction with the regular coffee mornings held on the 3rd Saturday monthly. And it's never too late to join the Club, just pick up the 'phone and dial 861334 when I will be pleased to make arrangements for you.

New Year resolutions are full of good intentions, but sadly they often lapse. May I offer one resolution that's easy to keep - resolve to support the Village Hall in all its various activities, and you will bask in a glow of self-satisfaction. Happy New Year.

John Temple

Chairman, Village Hall Management Committee



Farewell Muffins

Parting from one's family on the other side of the world is rather hard, but this time the pain was softened by the delicious muffins my daughter made for us to have with our last cup of coffee. The recipe comes from Annabel Langbein's Great Food for Busy Lives. I have never made good muffins but the secret – so Gilly says – is to have the batter really wet and to stir in the flour very very lightly!

100g butter

½ cup brown sugar

2 eggs

1 small ripe banana

1 cup buttermilk (or substitute milk)

1 tsp baking soda

2 ½ cups self-raising flour

½ tsp salt

1 cup fresh or frozen berries (well drained and chopped) Strawberries, raspberries or blue berries

Heat the oven to 200 C. Beat or blend together the butter, sugar, eggs, banana, milk and baking soda. Combine the flour and salt. Make a well in centre and quickly add the liquid. Mix lightly about 4 times then add the fruit and stir just to incorporate. Spoon into muffin papers to three-quarters full. Bake for 12 mins, or until puffed and golden.

Jane Spence

With Thanks

Funeral of Major General EJ Hellier

Margo and her family send their warmest thanks to all those who came to James's funeral on 23rd November 2011, for the very generous donations given to Help for Heroes in memory of James and for all the kind letters of support and cards.

We give special thanks to all those who worked so hard to get Wherwell Church and grounds ready for the service; we really appreciated being able to have the funeral in the village.

Special thanks also to Mike and Mary for the photo boards, to Jo, Mary and their helpers for the beautiful flowers and to the Parish Council for arranging for the lane to be clear and tidy.

Margo Hellier

Keeping warm and healthy this winter

Winter is not everyone's favourite time of the year and the cold weather can be a worry for many of us, especially for the older members of our community. But there are ways to stay safe and healthy and save money this winter:

Make sure you claim money you are entitled to. If you're over 60, you could be entitled to benefits.

Eat well. Hot meals and drinks help keep you warm, so eat at least one hot meal and have hot drinks during the day.

Keep moving. Staying active is not only essential for your general wellbeing and fitness – it also generates heat and helps to keep you warm.

Have a seasonal flu jab. If you are 65 or over, the carer of an older person or have some health conditions, your jab will be free.

Wrap up warm and prevent chilblains. Wear layers of clothes for warmth, including trousers, socks or thick tights and a scarf, hat and gloves whenever you go out in the cold.

Keep your spirits up. It's not unusual to feel a bit down in winter. If you can't visit friends or family, make sure that you phone them regularly for a chat. It helps to do something you enjoy every day.

Age UK Andover is working to reduce the number of preventable winter deaths in older people in the Test Valley and to make this time of year better for those who may have otherwise nowhere to turn. We can provide information on winter warmth, advice and help to get eligible benefits and emergency support for vulnerable older people. We are open every weekday morning. Contact us at Town Mill House, 20 Bridge St, Andover, SP10 1BL or telephone 01264 354425.

Upper Clatford All Saints Winter Lectures

6th February 2012 – St John Eye Hospital - Jerusalem, the West Bank and Gaza (<http://www.stjohnseyehospital.org>)

Established in Jerusalem in 1882, the St John of Jerusalem Eye Hospital Group is the only charitable provider of eye care in Gaza, the East Jerusalem and the West Bank, where rates of blindness are ten times higher than in the West. **Dr Denise Magauran**, the former Chief Surgeon will describe the important work done in this highly volatile, dangerous and politically sensitive area.

The lectures start at 8pm in the **Upper Clatford Village Hall**. If you would like tickets, please contact Charles Crosthwaite Eyre (The Old Malthouse, Upper Clatford, Andover, Hampshire SP11 7QL; e-mail charles.eyre@talktalk.net or tel 01264 35 25 30) to confirm how many tickets you want and for which talks.



Are you are a Marmalade Maker?

If so, why not enter a jar or two of your home made marmalade into the world's original Marmalade Festival?

The festival, held at Dalemain Mansion and Gardens in Cumbria on 25th and 26th February 2012, primarily raises funds for the Hospice at Home Service for Carlisle and North Lakeland. However, the organisers are keen to support the Hospice Movement throughout the UK and encourage entries from other areas, thus all the entry fees raised from the Andover area will be donated to **THE COUNTESS OF BRECKNOCK HOUSE**, your local hospice.

An entry form is attached for your convenience and should you need extra copies they can be picked up from the Hospice Reception, Kenyon's Fruit and Vegetable shop (off Weyhill Road, Andover), or you can download a form from the 'homemade' category on their website www.marmaladeawards.com

It is worth visiting the website to read the history and full details of the competition, plus lots of other interesting marmalade facts and information.

There are a number of different categories you can enter - 'Seville', 'Family Affair', 'International' to name just a few and in addition to the prestigious prizes awarded to the finest marmalades there are also awards for the best label and best dressed jar.

Once made take your jar(s) of marmalade - labelled underneath with your name and address together with a completed entry form and entry fee of £6.00 per jar placed in an envelope attached to the jar with an elastic band - to either the Hospice Reception or Kenyon's by **8th February 2012**.

The jars of marmalade will then be transported by road to Cumbria in time for the all important judging.

GOOD LUCK TO ALL ENTRANTS!!



Save the Date

Saturday 19th May, 7.30 pm: Concert at St Peter and Holy Cross Church, Wherwell Introducing 'Vocalium' - A new chamber choir under the direction of Dale Webb in aid of the Church Restoration. Project Tickets: £10 (£6 concession).

Join us for the inaugural concert of Vocalium, a choir with a passion for the music from Tudor England and music written since the year 2000.

Contact Dale Webb for more details: dalewebb@mac.com or 860074

Lady Tuke Tribute

Emilia Mila Antic was born in Belgrade in May 1923 and lived there until her life changed dramatically just before her 19th birthday when Hitler and Mussolini occupied Yugoslavia and she decided to go across the border to Trieste in Italy. Although the war was tragic, without it she wouldn't have met her husband, Major Anthony Tuke of the Scots Guards, who had just fought in the **Battle of Anzio** which subsequently led to the fall of Rome. They married in 1946 in St. George's Anglican church in Venice and returned to England where she became the dutiful wife of a banker.

A banker's wife in those days was a full-time job which Mila took very seriously, accompanying Sir Anthony on his frequent business trips around the world and helping him through those awkward gaps in small-talk with her effortless charm and easy-going manner.

They moved to Freelands after the death of her father-in-law in 1975 who had lived there since 1956, and although much of her time was spent in London after her daughter and son-in-law moved to Upper Clatford with their family, she spent much more time in Wherwell. She became an accomplished fisherwoman and spent many long evenings at the riverbank completely forgetting the time until her husband wanted to know where his dinner was! Eventually, with old age creeping in, they built a bungalow in the garden and moved into that in 2000 when Eva and Nick moved to Freelands. Sadly Sir Anthony only lived there for a few months before his death in 2001 but Mila began to enjoy country life and spent less and less time in London. She loved being with her family and seeing all the grand-children growing up – never short on advice for anyone – and was a forth-right and powerful personality but with an emotional and deeply loving heart.

Eva Gordon-Creed

Chilbolton Village Hall

Management Committee

Jumble Sale

Saturday, 10th March from 2pm

Chilbolton Village Hall

All donations of jumble to the Hall after 10am please

Enquiries to Beryl Lawrence on 860618

Registered Charity No. 301781

WHERWELL SCHOOL PARENT TEACHER ASSOCIATION

PTA Quiz and Curry Night

PRIZES

CURRY

BAR

Friday 10th Feb 2012

Chilbolton Village Hall 7pm till 11pm

Teams of 8 £10 per person Maximum of 12 teams

First come, first served - [book now!](#)

Tickets will be available from the school office from Mon 6th Feb

Tribute to Bee Green

Beatrice Mary Green lived for over thirty years in Wherwell, in New Barn Lane, Fullerton Road and Chant Close, before moving to her last home at Sutton Manor. She was born in 1914 in Sheffield where she spent her childhood, but sadly was orphaned by the loss of both parents by the age of 15. Her life and career began again when she moved to London and started to train as a teacher at the famous Whitelands College in Roehampton. She often spoke with fondness of her time there, including the year of her appointment as the May Queen.



Portrait of Bee by Mary Gee

Perhaps her greatest moment at Whitelands was her meeting of the college chaplain, the Reverend Herbert Green. They fell in love and married soon after. There then began for them both a long period of ministry and service.

After teaching in the slums of Sheffield, Bee found herself working in Whitechapel at the 'hospital for girls in trouble', then in Streatham and Blackheath. By this time World War II had broken out and their lives were set in the stress and dangers of London at war.

What a contrast to find themselves, later in life, living in the Hampshire countryside ministering to the parishes of Longstock and Leckford. On her husband's death in 1980, Bee moved to Wherwell. She soon became part of the village, both with devoted membership of the church and taking part in village activities, such as the Cockatrice Quilters, as well as other social groups.

Ray Blazdell

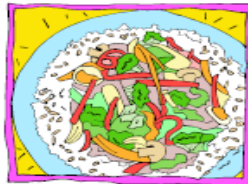
Eastern Feast



Saturday 25th February
12.30-3.00 pm
Chilbolton Village Hall

Funds in aid of Chilbolton Village Hall.

**COME TO OUR EASTERN BUFFET
AND ENJOY DELICIOUS AUTHENTIC
RECIPES FROM THE PHILIPPINES
PREPARED BY
MARIA DELA PIEDRA**



Eat-As-Much-As-You-Like Ticket Prices:
£7.50 (adults)
£5.00 (children 5-16)
Under 5's free

Drinks available

Tickets from:
Beryl Lawrence 860618 Debbie Richardson 861082
Maureen Treadwell 860380

A Matter of Life and Death

“A fate worse than death” is a silly phrase lightly used. It is never a question of how long we live, but of how well we live, and there are many fates worse than death. If we are liars and cheats, traitors or torturers, whatever we may have won by such methods we shall have lost in God’s eyes. If we believe there is no God, and death is a “wipe-out”, perhaps there may be validity in “A fate worse than death”. But with God there is also no hope, no forgiveness, a self-judgement without love. For our God is a God of love, known as that through the Bible; through the Cross and Resurrection; and through experience. For in what happens after our death, we believe we can trust God to act from love and not from anger, punishment or revenge. There is so much we cannot know, but let me offer you some of what we can be sure of:

Believe in God, otherwise one cannot have anything positive in which to believe! I have no doubt non-Christians can also find God, but for us Christ is the key. If his

(continued on p. 35)

Cross and Resurrection were not to bring us to eternal life, then what was it all for – and how could the Bible (New Testament) and martyrs, have got it so wrong?

We believe that God longs for us to respond in love and faith, “God in us and we in God,” or put it in St. Augustine’s words, “Love God and do as you want”, BECAUSE if we love God we shall know how he wants us to act, and try to live up to it.

I have quite a bit of second-hand experience of Life after Death, starting with the book of some forty years ago, “Life after Life” by Dr. Moody. He interviewed some 300 people in the USA who had had a near-death experience, which varied from no memory of what happened, to a very full account. Many met “A Being of Light”, whom Christians recognised as Christ, with whom they had an instant replay of their lives. This was not a Court of Justice, but to search out what the person had given and learnt of love – God’s love, our love to people, to God, to the world. And the second after love was simply what they had learned from the life they had led. The exercise of Love and of Learning is what our life is for.

The most frequent comment by those who went through a near-death was “I’ll never be afraid of death again”. They had so strong a sense of love, of caring and of peace that it still carried on in this life!

Yes, I believe in ghosts, and find in them both proof of life beyond death, and the powers of Jesus Christ today to release them into peace. Nor are ghosts to be feared, but should be given the chance in Christ to find their release, which is what exorcisms are for.

Beyond our death is a new existence, without the limitations of Time and Space. It is so different we cannot know more about it, because our experience is limited by earthly concepts. That is why Jesus said, “I am the way, the truth and the life.” It is Christ who “brings us to himself.”

I have a little parable picture of the glory of God. The nave of Winchester Cathedral is filled with an enormous black box. We can hear something of the sounds of glory escaping from the box. Then as we approach, we can see rows of pinholes along the side. Through these we shall see just a fraction of the entire scope of God’s glory. It is as much as we in this life can comprehend.

The Roman Catholics have a tradition of Purgatory, a state after our death of learning, of repentance and of preparation to enter the fullness of glory. There is no scriptural evidence for this, but it does seem to me to be a very useful (or necessary) first step in going from life to life.

If anyone would like to discuss the points made here, call me on 860275 and we’ll arrange a meeting.

Piers Warburton

PS Some years ago, at a dinner he was hosting, Lord Thompson the newspaper proprietor, asked a Christian philosopher at the table how he could be so sure of his Christian principles. To which he replied, “I have always found God to be very logical. I did not want to be born, and yet I now realise how small was my world. From there I had to grow up to adult comprehension. I believe a God who will take that much trouble to prepare me for the next step, is not going to stop now!”



Bee Diary February 2012



Along with the snowdrops, Camellias are starting to flower as I write this in early January. Probably the blooms will get zapped by the frosts to come, unless early spring is as mild as the autumn has been. For the bees, the warm autumn and winter is proving to be a mixed blessing. It enables them to get out of the hive on cleansing flights, and so far the woodpeckers have had plenty to eat in trees and lawns without having to attack the hives. However the greater activity within the hive, resulting from the unseasonal warmth will undoubtedly get the bees eating their winter stores more rapidly and could lead to a premature expansion of the queen's laying area, the brood nest, too early with months of cold weather to come. In normal years the gradual lengthening of the days after the winter solstice stimulates the queen to increase slowly her egg laying and as January goes on, young bees hatch to replace the older ones dying off. It is this balance between new bees being produced and old bees dying that determines the rate of expansion of the brood nest, which must be kept warm by living bees at all times. If early spring is uncharacteristically warm, the brood nest can expand too rapidly for the number of "central heating bees" and if a sudden cold snap occurs, the brood nest is then forced to contract and developing larvae on the outside are chilled to death.

Andover Beekeepers staged their first honey show for many years at the Association Annual General Meeting in December. Naturally Chilbolton Honey was entered and who came away with two 1st prize rosettes, and two silver cups – Jennie. Her entries beat all mine; I had thought our entries were all virtually identical, having come straight out of the honey basket. It would appear that showing honey is an art form in itself; the liquid honey must have no bubbles or crystals and the set honey must be free of bees knees, a fine filter is essential. Our honey judge had this year won five prizes at the National Honey Show, although this was his first time as a judge.

For the bees, a cold February is a month of kicking their heels in the hive. On bright sunny days they might take a short flight and look out for pollen from the hazel, snowdrops and crocuses. New pollen is very valuable for the raising of young bees; last summer's pollen doesn't always store as well as honey and can go mouldy in the hive. Other bees collect water to dilute the solid honey stores so that they can be consumed. Young bees are starting to hatch out in increasing numbers and honey stores are being rapidly used up.

Jolyon Pope

Chilbolton FC – Monthly Update – January 2012

13 November 2011	Abbotts Ann	4	V	1	Chilbolton (League)
20 November 2011	Chilbolton	1	V	5	Abbotts Ann (League)
27 November 2011	FC Chute Sports	2	V	1	Chilbolton (Cup)
04 December 2011	Chilbolton	4	V	0	Wallop Wanderers (League)

On a very muddy Abbotts Ann pitch the losing streak we are currently in continued as Abbotts Ann capitalised on some individual errors by Chilbolton to win the game 4-1. The overall team performance was good though and there was some neat passing football in the middle of the park as Andy Burgess and Matt Carrott controlled the ball well. New signing Tim Crouch scored the only goal for Chilbolton heading home an Andy Burgess free kick. Goal line clearances from David Mattock and Wolfie kept the score down.

Our next game saw us facing Abbotts Ann again in the return home fixture and the result was very similar although Abbotts Ann managed to score one more. It was a difficult week with a number of players unavailable however the team was still a strong one. Losing an early goal proved to be the difference and we were unable to recover with only one consolation goal in the second half from Tom Blackwell.

We returned to cup action again with an away fixture against FC Chute Sports and put in a much improved performance and despite losing it will give us a big confidence boost going into the next league game. David Mattock scored the only goal and David Baker delivered a man of the match deserving performance at the back making some goal saving tackles and instigating a number of attacking moves.

Back at home for our first game of December and back to the league with a game against Wallop Wanderers who also find themselves near the bottom of the table. Chilbolton delivered an excellent performance and ended up winning 4 – 0, a great result giving us three valuable points and keeping a clean sheet. First half goals from David Mattock and Chris Logan where added to in the second half by Steve Jenkins and Ollie Southworth. The midfield duo of Luke Donovan and Matt Carrott proved to be very successful, Matt in particular had a fantastic game earning him the man of the match award.

You can now follow the team live on Twitter (@chilboltonfc) with live pitch side tweets as well as team news and Manager insights in between games. You can also keep in touch with the team at www.chilboltonfc.co.uk and we look forward to seeing you at one of our future games, supporters welcome with tea and coffee at half time and then after the game at the Abbotts Mitre where Tom and the team always look after us. See you there!

Sam Horne (07969 055300) - Manager



Spring is on its way!

It was lovely to welcome the children back to Pre-school after the Christmas holidays. They all enjoyed meeting up with their friends and coming back to play in our Pre-school.

The children had all painted a canvas before Christmas and every parent bought at least one which has enabled us to buy an Ipod and docking station for the Pre-school. Sam and her team would like to thank all the parents that supported us and we hope they are enjoying the art work! And hope of course that it has pride of place on the wall!

We are looking forward to getting outside in our sensory garden and planting bulbs ready for the Spring. It needs a good tidy up after the Winter and the children enjoy helping the staff with the weeding. They particularly love finding the insects and worms!

Our Pre-school is currently full but we are taking names for places from September 2012. If you have a child aged 2 years or over then please do give us a call and arrange a visit.

Call Sam for more information or to arrange a visit on 07732 095814 or 07919 130777 or email enquiries@chilboltonpreschool.com

New Course for Andover Deanery

How much is it? How much does it cost? In these economically challenging times, this is one of the key considerations before we decide to buy. Is it worth it we muse as we wonder whether to go along to the Winchester Farmers' Market? Or could I use my time better in another way? These issues of cost and value apply in our life of discipleship too. Jesus indicated in the gospels that if we want to follow him it will cost us our lives. So how do we respond to his call? By giving him the full value that he is due.

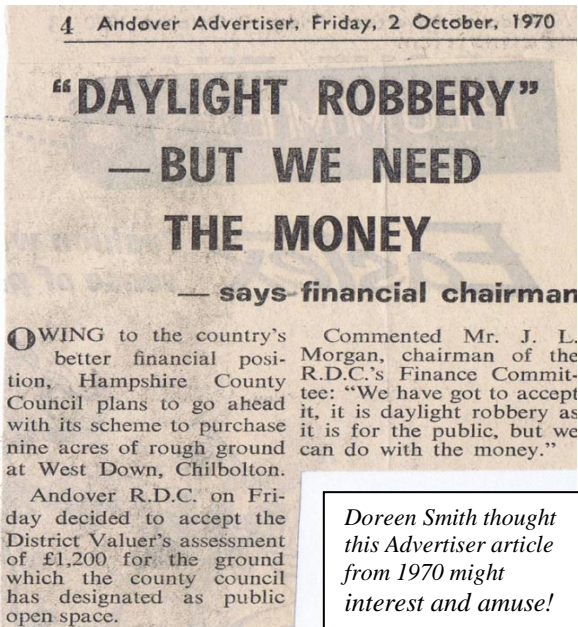
This year sees the launch of a new deanery course on Leading Worship that aims to help us give to God the full value (worth) in our church and personal lives. That is, to honour him with our whole-hearted "worth-ship", which is where the word worship comes from. Much that is offered to people on a week by week basis through the Church community is good, but as an infant school headteacher used to say to me, we can always do better.

The course is aimed at *everyone* who wants to grow in understanding of how to nurture their own worship, and how to lead other effectively in worship. So musicians and non-musicians are welcome, intercessors, creative arts people, lay and ordained, sound tech. people, and even those who don't play an obvious role in services but who simply want to be inspired. All are welcome!

(Continued on p.39)

Beginning in September 2012, there will be a session on a Saturday morning once a month throughout the academic year. Each session will involve theory and practical work, in small groups and all together, to help you learn about 'why' as well as 'how'.

Might you be interested? There will be a Taster Session on Saturday 16th June 2012 at St. Michael's West Andover (times to be confirmed). This will give you a chance to see what it might be like, and help to provide you with more detailed information about the course. Coming to this will not commit you to attending the full course. If you are interested, please sign up by telephoning the Downs Benefice Office on 01962 880845.



Village Contacts – Parish Councillors

Wherwell Councillors

Jane Andrews (Chair)	860635
Sean Hutton (Vice Chair)	860443
Liz Blakemore (Clerk)	860385
Peter Bryant (Tree Warden)	860541
Susanne Horne	860741
Steve Shean	860249
Lizzie Broadbent	860434
George Hampson	860721

Chilbolton Councillors

Alan Crisp (Chairman)	860641
David Griffiths (V/Chair)	860313
Mandy Amor (Clerk)	860566
Will Austin	861204
Patrick Coates	860069
Tony Ewer	860486
John Irish	860526
Martin Gossling	861375
John Rowles	860308

Village Contacts - District & County Councillors

Wherwell District Councillor

Jim Neal 362456

County Councillor

Andrew Gibson 861138

Chilbolton District Councillors

Daniel Busk 01794 388389

Peter Boulton 01794 301212

Village Contacts – Clubs & Organisations

Clubs and organisations

Badminton	Jill Lord	860667
Beavers/Cub scouts	Leigh Dance	811074
Brownies	Julie Shone	01962 761269
Care Group	Peter Ward	860528
	Mike Davis	860594
Chilbolton Players	Andrew Coombes	860886
Chilbolton Coffee Morning	Sheila Laughton	860460
	Lesley Boswell	860217
	Debbie Richardson	861082
Chilbolton Football Club	Sam Horne	07969 055300
Chilbolton Neighbourhood Watch	Maria Watson	860415
Flood Advisory Group	Jeremy Baines	860448
	Terry Gilmour	860507
Bridge Club	Gee parry	861136
Horticultural Society	Sheila Evans	860697
Joyrides Community Bus	Mary Dunne	860398
	John Musters	810459
Pre-School	Deb & Richard Richardson	861082
Village Hall (Chil) - Booking Only	Becky Williams	861033
Village Hall (Chil) - All other matters	John Temple	861334
Village Hall (Wher) - Bookings	Julie Dickenson	861494
Village Websites	<u>www.chilbolton.com & www.wherwell.net</u>	
Wherwell Church Flowers	Jo Baughen	860319
Wherwell Cricket Club	Richard Rowles (Chair)	861101
	Jo Baughen (Juniors)	860319
Wherwell History Group	Andrew Flanagan	860560
Wherwell Playing Fields	Sean Hutton (Chair)	860443
Wherwell Primary School	Mary Gee	860592
Community Governors	Sandy Farrand	860492
	Sean Hutton	860443
Wherwell Neighbourhood Watch	Richard Rowles	861101
Wherwell Singers	Dale Webb	860074
Wherwell Wives Group	Gill Granger	860870
Women's Institute	Sue Batchelor	860307
Test Villages U3A (www.testvillagesu3a.org.uk)	Ed Farrand	860492